



99% Alumina Crucible

■ Feature

1. Excellent heat resistance and high strength at high temperature
2. High mechanical strength
3. High heat conduction and excellent thermal shock resistance
4. It is stable to chemicals and molten metal, and has excellent corrosion resistance under high temperature.
5. The oxidation and reduction atmosphere is extremely stable at high temperature
6. Good electrical insulation at high temperature

■ Applications

- Piezoelectric, dielectric and other electronic component materials
- Positive electrode material
- PZT material
- Luminescent material
- Cinn article – molten metal
- NAS reservoir material

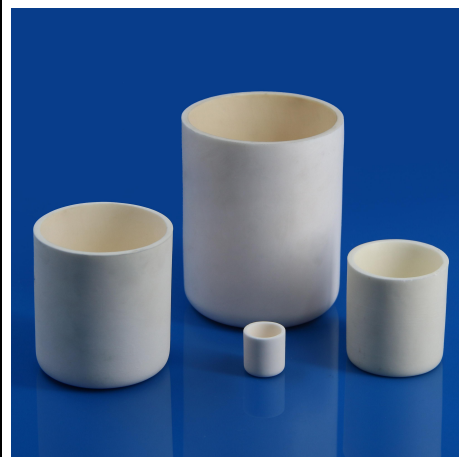
■ Main Technical Data

Al ₂ O ₃	≥99%
Color	Yellow
Specific Density	3.9 g/cm ³
Hardness	15 Gpa
Elastic Modulus	55000 N
Compressive Strength	2082 MPa
Flexural Strength	326 MPa
Tensile Strength	131 MPa (20°C)
Fracture Toughness	5.42 MPa·m ^{1/2}
Poisson's Ratio	0.18



■ Sizes

Code	External Diameter (mm)	Inner Diameter (mm)	Height (mm)	Capacity (ml)
AC01	9.0	8.0	15.0	0.7
AC02	16.0	10.0	30.0	2.5
AC03	18.0	12.0	30.0	3.5
AC04	14.0	9.0	50.0	3.0
AC05	20.0	14.0	40.0	6.5
AC06	24.0	20.0	23.0	7.0
AC07	25.0	20.0	25.0	7.0
AC08	30.0	24.0	30.0	13.0
AC09	31.0	27.0	41.0	22.0
AC10	36.0	25.0	59.0	26.0
AC11	35.0	30.0	132.0	90.0
AC12	50.0	46.0	60.0	90.0
AC13	56.0	51.0	60.0	117.0
AC14	60.0	55.0	60.0	130.0
AC15	40.0	35.0	154.0	140.0
AC16	110.0	102.0	140.0	1000.0
AC17	115.0	105.0	145.0	1200.0
AC18	115.0	98.0	181.0	1280.0
AC19	120.0	110.0	140.0	1280.0
AC20	125.0	115.0	145.0	1400.0
AC21	127.0	121.0	228.0	2500.0
AC22	171.5	158.8	152.4	3000.0



* Support customization;

* Lids are available if required.

■ Sizes

Code	Outer Diameter Of Top Grade (mm)	Bottom Outer Diameter (mm)	Inner Diameter (mm)	Height (mm)	Capacity (ml)
AA01	34.0	20.0	29.0	40.0	20.0
AA02	40.0	24.0	36.0	38.0	25.0
AA03	40.0	22.0	36.0	48.0	40.0
AA04	60.0	40.0	56.0	70.0	130.0
AA05	68.0	34.0	61.6	56.5	125.0
AA06	78.0	46.0	74.0	90.0	300.0
AA07	100.0	77.0	94.0	80.0	400.0
AA08	90.0	40.0	82.0	130.0	600.0
AA09	95.0	85.0	85.0	110.0	1000.0
AA10	120.0	77.0	108.0	160.0	1400.0



* Support customization;

* Lids are available if required.

■ Sizes

Code	Length (mm)	Width (mm)	Height (mm)	Wall Thickness (mm)
AZ01	30.0	20.0	15.0	2.0
AZ02	50.0	10.0	10.0	2.0
AZ03	65.0	55.0	65.0	5.0
AZ04	80.0	50.0	7.0	1.5
AZ05	100.0	10.0	10.0	2.0
AZ06	100.0	20.0	20.0	2.0
AZ07	100.0	30.0	30.0	1.5
AZ08	100.0	40.0	18.0	2.0
AZ09	100.0	50.0	30.0	4.0
AZ10	105.0	22.0	14.0	2.0
AZ11	184.0	123.0	62.0	5.0
AZ12	200.0	100.0	50.0	2.0
AZ13	300.0	36.0	18.0	3.0

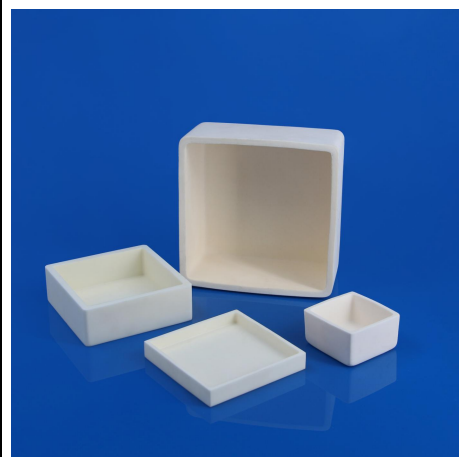


* Support customization;

* Lids are available if required.

■ Sizes

Code	Length (mm)	Width (mm)	Height (mm)	Wall Thickness (mm)
AS01	10.0	10.0	5.5	2.0
AS02	20.0	20.0	15.0	2.0
AS03	30.0	30.0	30.0	2.3
AS04	45.0	45.0	30.0	2.5
AS05	55.0	55.0	30.0	3.5
AS06	70.0	70.0	30.0	3.0
AS07	80.0	80.0	40.0	4.3
AS08	90.0	90.0	30.0	3.5
AS09	100.0	100.0	30.0	4.0
AS10	100.0	100.0	50.0	3.8
AS11	100.0	100.0	100.0	4.0
AS12	155.0	155.0	70.0	5.0
AS13	200.0	200.0 </td <td>45.0</td> <td>6.0</td>	45.0	6.0



* Support customization;
* Lids are available if required.

■ Sizes

Code	Diameter (mm)	Height (mm)
AP01	5.0	2.5
AP02	5.0	4.0
AP03	6.0	4.0
AP04	6.0	4.0
AP05	8.0	4.0
AP06	5.0	8.0
AP07	6.0	2.6
AP08	7.0	22.0
AP09	8.0	8.0
AP10	8.0	40.0



* Support customization;

* Lids are available if required.



INNOVACERA

technical ceramic solutions .com



0086 592 558 9730



sales@innovacera.com



www.innovacera.com

XIAMEN INNOVACERA ADVANCED MATERIALS CO.,LTD

Block A, 6/F, No.588 Jiahe Road, Torch High-tech Industrial District,
Xiamen, China